
Product Datasheet

**REA/PHB2 Antibody (monoclonal, 2B5)
(orb738493)**

Description

REA/PHB2 Antibody (monoclonal, 2B5)

Species/Host

Mouse

Reactivity

Human, Mouse, Rat

Conjugation

Unconjugated

Tested Applications

FC, IHC, WB

Immunogen

E.coli-derived human REA/PHB2 recombinant protein (Position: M1-K299).

Form/Appearance

Lyophilized

Concentration

Adding 0.2 ml of distilled water will yield a concentration of 500 µg/ml.

Storage

Store at -20°C for one year from date of receipt. After reconstitution, at 4°C for one month. It can also be aliquotted and stored frozen at -20°C for six months. Avoid repeated freeze-thaw cycles.

Note

For research use only

Application notes

Tested Species: In-house tested species with positive results. Other applications have not been tested. Optimal dilutions should be determined by end users. Add 0.2ml of distilled water will yield a concentration of 500ug/ml.

Isotype

Mouse IgG2b

Clonality

Monoclonal

MW

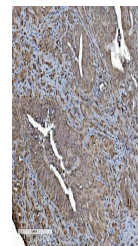
32 kDa

Uniprot ID
[Q99623](#)
Expiration Date

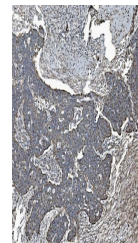
12 months from date of receipt.



Western blot analysis of REA/PHB2 using ...



IHC analysis of REA/PHB2 using anti-REA/...



IHC analysis of REA/PHB2 using anti-REA/...