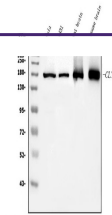

Product Datasheet

**Clathrin heavy chain/CLTC Antibody (monoclonal,
6D3) (orb738492)**

Description

Clathrin heavy chain/CLTC Antibody

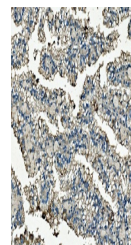
Species/Host	Mouse
Reactivity	Human, Mouse, Rat
Conjugation	Unconjugated
Tested Applications	FC, IHC, WB
Immunogen	E.coli-derived human Clathrin heavy chain/CLTC recombinant protein (Position: R967-Q1668).
Form/Appearance	Lyophilized
Concentration	Adding 0.2 ml of distilled water will yield a concentration of 500 µg/ml.
Storage	Store at -20°C for one year from date of receipt. After reconstitution, at 4°C for one month. It can also be aliquotted and stored frozen at -20°C for six months. Avoid repeated freeze-thaw cycles.
Note	For research use only
Application notes	Tested Species: In-house tested species with positive results. Other applications have not been tested. Optimal dilutions should be determined by end users. Add 0.2ml of distilled water will yield a concentration of 500ug/ml.
Isotype	Mouse IgG2b
Clonality	Monoclonal
MW	180 kDa
Uniprot ID	Q00610
Expiration Date	12 months from date of receipt.



Western blot analysis of Clathrin heavy ...



IHC analysis of Clathrin heavy chain/CLT...



IHC analysis of Clathrin heavy chain/CLT...