
Product Datasheet

**HP1 alpha/CBX5 Antibody (monoclonal, 8G6)
(orb738489)**

Description

HP1 alpha/CBX5 Antibody (monoclonal, 8G6)

Species/Host

Mouse

Reactivity

Human, Mouse, Rat

Conjugation

Unconjugated

Tested Applications

FC, ICC, IF, IHC, WB

Immunogen

E.coli-derived human HP1 alpha/CBX5 recombinant protein (Position: M1-S191).

Form/Appearance

Lyophilized

Concentration

Adding 0.2 ml of distilled water will yield a concentration of 500 µg/ml.

Storage

Store at -20°C for one year from date of receipt. After reconstitution, at 4°C for one month. It can also be aliquotted and stored frozen at -20°C for six months. Avoid repeated freeze-thaw cycles.

Note

For research use only

Application notes

Tested Species: In-house tested species with positive results. Other applications have not been tested. Optimal dilutions should be determined by end users. Add 0.2ml of distilled water will yield a concentration of 500ug/ml.

Isotype

Mouse IgG2b

Clonality

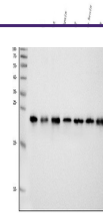
Monoclonal

MW

22 kDa

Uniprot ID
[P45973](#)
Expiration Date

12 months from date of receipt.



Western blot analysis of HP1 alpha/CBX5 ...



IHC analysis of HP1 alpha/CBX5 using ant...



IHC analysis of HP1 alpha/CBX5 using ant...