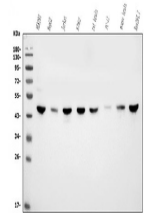


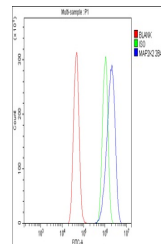
## Product Datasheet

# MEK2/MAP2K2 Antibody (monoclonal, 2B4) (orb738482)

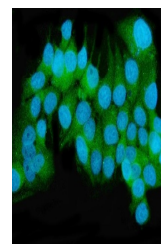
<b>Description</b>	MEK2/MAP2K2 Antibody (monoclonal, 2B4)
<b>Species/Host</b>	Mouse
<b>Reactivity</b>	Human, Mouse, Rat
<b>Conjugation</b>	Unconjugated
<b>Tested Applications</b>	FC, ICC, IF, WB
<b>Immunogen</b>	E.coli-derived human MEK2/MAP2K2 recombinant protein (Position: M1-V400).
<b>Form/Appearance</b>	Lyophilized
<b>Concentration</b>	Adding 0.2 ml of distilled water will yield a concentration of 500 µg/ml.
<b>Storage</b>	Store at -20°C for one year from date of receipt. After reconstitution, at 4°C for one month. It can also be aliquotted and stored frozen at -20°C for six months. Avoid repeated freeze-thaw cycles.
<b>Note</b>	For research use only
<b>Application notes</b>	Tested Species: In-house tested species with positive results. Other applications have not been tested. Optimal dilutions should be determined by end users. Add 0.2ml of distilled water will yield a concentration of 500ug/ml.
<b>Isotype</b>	Mouse IgG2b
<b>Clonality</b>	Monoclonal
<b>MW</b>	45 kDa
<b>Uniprot ID</b>	<b>P36507</b>
<b>Sensitivity</b>	> 5000 cells
<b>Expiration Date</b>	12 months from date of receipt.



Western blot analysis of MEK2/MAP2K2 using anti-MEK2/MAP2K2 antibody.



Flow Cytometry analysis of A431 cells using anti-MEK2/MAP2K2 antibody.



IF analysis of MEK2/MAP2K2 using anti-MEK2/MAP2K2 antibody.