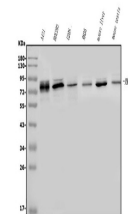


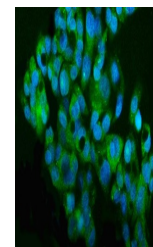
Product Datasheet

MT2-MMP/MMP15 Antibody (orb738455)

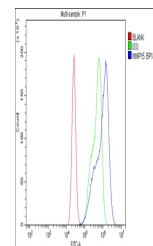
Description	MT2-MMP/MMP15 Antibody
Species/Host	Rabbit
Reactivity	Human, Mouse, Rat
Conjugation	Unconjugated
Tested Applications	ELISA, FC, ICC, IF, WB
Immunogen	E.coli-derived human MT2-MMP/MMP15 recombinant protein (Position: Y132-A202).
Form/Appearance	Lyophilized
Concentration	Adding 0.2 ml of distilled water will yield a concentration of 500 µg/ml.
Storage	Store at -20°C for one year from date of receipt. After reconstitution, at 4°C for one month. It can also be aliquotted and stored frozen at -20°C for six months. Avoid repeated freeze-thaw cycles.
Note	For research use only
Application notes	Tested Species: In-house tested species with positive results. Other applications have not been tested. Optimal dilutions should be determined by end users. Add 0.2ml of distilled water will yield a concentration of 500ug/ml.
Isotype	Rabbit IgG
Clonality	Polyclonal
MW	74 kDa
Uniprot ID	P51511
Expiration Date	12 months from date of receipt.



Western blot analysis of MT2-MMP/MMP15 u...



IF analysis of MT2-MMP/MMP15 using anti-...



Flow Cytometry analysis of CACO-2 cells ...