

---

## Product Datasheet

### **Tubulin alpha Antibody (monoclonal, 7B12) (orb738419)**

**Description**

Tubulin alpha Antibody (monoclonal, 7B12)

**Species/Host**

Mouse

**Reactivity**

Human, Mouse, Rat

**Conjugation**

Unconjugated

**Tested Applications**

FC, ICC, IF, IHC, WB

**Immunogen**

E.coli-derived human Tubulin alpha recombinant protein (Position: N18-A403).

**Form/Appearance**

Lyophilized

**Concentration**

Adding 0.2 ml of distilled water will yield a concentration of 500 µg/ml.

**Storage**

Store at -20°C for one year from date of receipt. After reconstitution, at 4°C for one month. It can also be aliquotted and stored frozen at -20°C for six months. Avoid repeated freeze-thaw cycles.

**Note**

For research use only

**Application notes**

Tested Species: In-house tested species with positive results. Other applications have not been tested. Optimal dilutions should be determined by end users. Add 0.2ml of distilled water will yield a concentration of 500ug/ml.

**Isotype**

Mouse IgG2b

**Clonality**

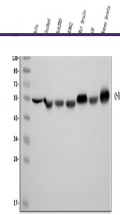
Monoclonal

**MW**

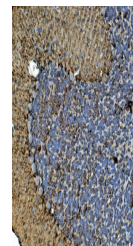
56 kDa

**Uniprot ID**
[Q71U36](#)
**Expiration Date**

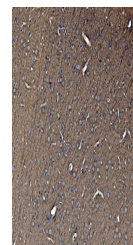
12 months from date of receipt.



Western blot analysis of Tubulin alpha u...



IHC analysis of Tubulin alpha using anti...



IHC analysis of Tubulin alpha using anti...