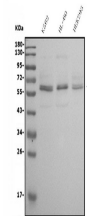


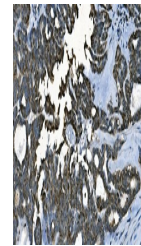
Product Datasheet

CDC45L Antibody (monoclonal, 6H6) (orb738407)

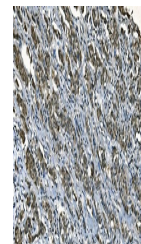
Description	CDC45L Antibody (monoclonal, 6H6)
Species/Host	Mouse
Reactivity	Human, Mouse, Rat
Conjugation	Unconjugated
Tested Applications	FC, IHC, WB
Immunogen	E. coli-derived human CDC45L recombinant protein (Position: E166-A431).
Form/Appearance	Lyophilized
Concentration	Adding 0.2 ml of distilled water will yield a concentration of 500 µg/ml.
Storage	Store at -20°C for one year from date of receipt. After reconstitution, at 4°C for one month. It can also be aliquotted and stored frozen at -20°C for six months. Avoid repeated freeze-thaw cycles.
Note	For research use only
Application notes	Tested Species: In-house tested species with positive results. Other applications have not been tested. Optimal dilutions should be determined by end users. Add 0.2ml of distilled water will yield a concentration of 500ug/ml.
Isotype	Mouse IgG1
Clonality	Monoclonal
MW	66 kDa
Uniprot ID	075419
Expiration Date	12 months from date of receipt.



Western blot analysis of CDC45L using an...



IHC analysis of CDC45L using anti-CDC45L...



IHC analysis of CDC45L using anti-CDC45L...