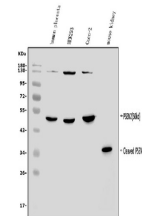


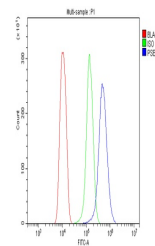
## Product Datasheet

### Presenilin 2/AD5/PSEN2 Antibody (orb738393)

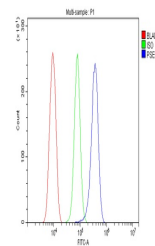
|                            |   |
|----------------------------|---|
| <b>Description</b>         | Presenilin 2/AD5/PSEN2 Antibody   |
| <b>Species/Host</b>        | Rabbit  |
| <b>Reactivity</b>          | Human, Mouse, Rat   |
| <b>Conjugation</b>         | Unconjugated  |
| <b>Tested Applications</b> | FC, ICC, IF, IHC, WB  |
| <b>Immunogen</b>           | A synthetic peptide corresponding to a sequence of human Presenilin 2/AD5/PSEN2 (STDNLVRPFMDTLASHQLYI).   |
| <b>Form/Appearance</b>     | Lyophilized   |
| <b>Concentration</b>       | Adding 0.2 ml of distilled water will yield a concentration of 500 µg/ml.   |
| <b>Storage</b>             | Store at -20°C for one year from date of receipt. After reconstitution, at 4°C for one month. It can also be aliquotted and stored frozen at -20°C for six months. Avoid repeated freeze-thaw cycles.                             |
| <b>Note</b>                | For research use only   |
| <b>Application notes</b>   | Tested Species: In-house tested species with positive results. Other applications have not been tested. Optimal dilutions should be determined by end users. Add 0.2ml of distilled water will yield a concentration of 500ug/ml. |
| <b>Isotype</b>             | Rabbit IgG  |
| <b>Clonality</b>           | Polyclonal  |
| <b>MW</b>                  | 34 kDa, 50 kDa  |
| <b>Uniprot ID</b>          | <b>P49810</b>   |
| <b>Expiration Date</b>     | 12 months from date of receipt.   |



Western blot analysis of Presenilin 2/AD...



Flow Cytometry analysis of HEPA1-6 cells...



Flow Cytometry analysis of RH-35 cells u...