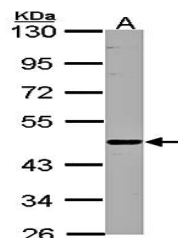


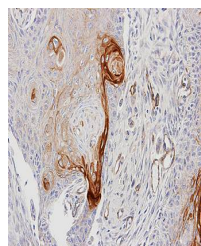
Product Datasheet

ENTPD6(CD39L2) antibody (orb73382)

Description	ENTPD6(CD39L2) antibody
Species/Host	Rabbit
Reactivity	Human
Conjugation	Unconjugated
Tested Applications	IHC, WB
Storage	Store at -20°C for long term preservation (recommended). Store at 4°C for short term use.
Note	For research use only
Clonality	Recombinant
Uniprot ID	O75354
Expiration Date	12 months from date of receipt.



Western Blot analysis of A:H1299 whole c...



Immunohistochemical analysis of formalin...