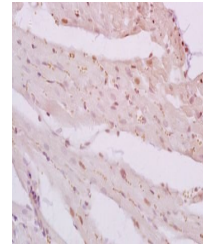


Product Datasheet

VASp(phospho-Ser239) antibody (orb7139)

Description	VASp(phospho-Ser239) antibody
Species/Host	Rabbit
Reactivity	Mouse
Conjugation	Unconjugated
Tested Applications	WB
Immunogen	KLH conjugated synthesised phosphopeptide derived from human VASP around the phosphorylation site of Ser239 (KV(p-S)KQ)
Target	Phospho-VASP (Ser239)
Preservatives	0.01M TBS(pH7.4) with 1% rAlbumin, 0.03% Proclin300 and 50% Glycerol.
Form/Appearance	Liquid
Concentration	1mg/ml
Storage	Shipped at 4°C. Store at -20 °C for one year. Avoid repeated freeze/thaw cycles.
Note	For research use only
Isotype	IgG
Clonality	Polyclonal
MW	40 kDa
Uniprot ID	P50552
Dilution Range	WB=1:500-2000
Expiration Date	12 months from date of receipt.



Immunohistochemical analysis of formalin...