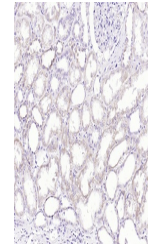


Product Datasheet

TIE2 (phospho-Ser1119) antibody (orb7093)

Description	TIE2 (phospho-Ser1119) antibody
Species/Host	Rabbit
Reactivity	Human
Conjugation	Unconjugated
Tested Applications	IHC-P
Immunogen	KLH conjugated Synthesised phosphopeptide derived from human Tie2 around the phosphorylation site of Ser1119 (DC(p-S)AE)
Target	Phospho-Tie2 (Ser1119)
Preservatives	0.01M TBS(pH7.4) with 1% rAlbumin, 0.03% Proclin300 and 50% Glycerol.
Form/Appearance	Liquid
Concentration	1mg/ml
Storage	Maintain refrigerated at 2-8°C for up to 2 weeks. For long term storage store at -20°C in small aliquots to prevent freeze-thaw cycles.
Note	For research use only
Isotype	IgG
Clonality	Polyclonal
MW	124 kDa
Uniprot ID	Q02763
Dilution Range	IHC-P=1:100-500
Expiration Date	12 months from date of receipt.



IHC-P
analysis of
Human
kidney using
Pho...