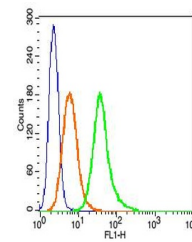


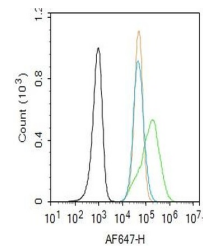
Product Datasheet

MAP2 (phospho-Ser136) antibody (orb7070)

Description	MAP2 (phospho-Ser136) antibody
Species/Host	Rabbit
Reactivity	Human, Rat
Conjugation	Unconjugated
Tested Applications	FC, IF, IHC-P
Immunogen	KLH conjugated synthesised phosphopeptide derived from human MAP2 around the phosphorylation site of Ser136 (PP(p-S)P)
Target	Phospho-MAP2 (Ser136)
Preservatives	0.01M TBS(pH7.4) with 1% rAlbumin, 0.03% Proclin300 and 50% Glycerol.
Form/Appearance	Liquid
Concentration	1mg/ml
Storage	Maintain refrigerated at 2-8°C for up to 2 weeks. For long term storage store at -20°C in small aliquots to prevent freeze-thaw cycles.
Note	For research use only
Isotype	IgG
Clonality	Polyclonal
MW	70/201 kDa
Uniprot ID	P11137
Dilution Range	IHC-P=1:100-500, IF=1:100-500, Flow-Cyt=0.2µg /Test, IHC-F=1:100-500, ELISA=1:5000-10000
Expiration Date	12 months from date of receipt.



Flow cytometry of RSC96 Cells(blue).Prim...



Flow cytometry of SH-SY5Y.Primary Antibo...