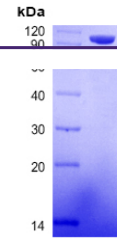


## Product Datasheet

### Human EPHA2 protein (orb706929)

**Description**

Recombinant Human EPHA2 Protein is produced by



SDS-Page analysis of Human EPHA2 protein...

<b>Reactivity</b>	Human
<b>Endotoxins</b>	Endotoxin: Less than 0.1 ng/μg (1 IEU/μg) as determined by LAL test.
<b>Tested Applications</b>	ELISA, MS, SDS-PAGE, WB
<b>Target</b>	EPHA2
<b>Preservatives</b>	Lyophilized from a 0.2 μm filtered solution of PBS, pH 7.4.
<b>Form/Appearance</b>	Lyophilized from a 0.2 μm filtered solution of PBS, pH 7.4.
<b>Storage</b>	Lyophilized protein should be stored at -20°C, though stable at room temperature for 3 weeks. Reconstituted protein solution can be stored at 2-8°C for 2-7 days. Aliquots of reconstituted samples are stable at -20°C for 3 months.

**Note** For research use only

**Application notes** Always centrifuge tubes before opening. Do not mix by vortex or pipetting. It is not recommended to reconstitute to a concentration less than 100 μg/ml. Dissolve the lyophilized protein in ddH<sub>2</sub>O. Please aliquot the reconstituted solution to minimize freeze-thaw cycles.

**Protein Sequence**

```
AQGKEVLLD FAAAGGELGW LTHPYGKGWD
LMQNIMNDMP IYMYSVCNVM SGDQDNWLRT
NWWYRGEAER IFIELKFTVR DCNSFPGGAS SCKETFNLYY
AESDLDYGTN FQKRLFTKID TIAPDEITVS SDFEARHVKL
NVEERSVGPL TRKGFYLAQ DIGACVALLS VRVYKCCPE
LLQGLAHFPE TIAGSDAPSL ATVAGTCVDH AVVPPGGEEP
RMHCAVDGEW LVPIGQCLCQ AGYEKVEDAC QACSPGFFKF
EASESPCLEC PEHTLPSEGE ATSCECEEGF FRAPQDPASM
PCTRPPSAPH YLTAVGMGAK VELRWTPPQD SGGREDIVYS
VTCEQCWPES GECGPCEASV RYSEPPHGLT RTSVTVSDLE
PHMNYTFTVE ARNGVSGLVT SRSFRTASVS INQTEPPKVR
LEGRSTTSLV VSWSIPPPQQ SRVWKYEVTY RKKGDSNSYN
VRRTEGFSVT LDDLAPDTTY LVQVQALTQE GQGAGSKVHE
FQTLSPGSG NDIEGRMDPK SCDKTHTCP CPAPPELLGGP
SVFLFPPKPK DTLMISRTPE VTCVVVDVSH EDPEVKFNWY
VDGVEVHNAK TKPREEQYNS TYRVVSVLTV LHQDWLNGKE
YKCKVSNKAL PAPIEKTISK AKGQPREPQV YTLPPSRDEL
TKNQVSLTCL VKGFYPSDIA VEWESNGQPE NNYKTTTPVL
DSDGSFFLYS KLTVDKSRWQ QGNVFCSVM HEALHNHYTQ
KSI SLSPGK
```