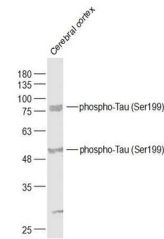


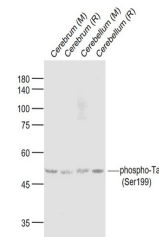
Product Datasheet

Tau protein (phospho-Ser199) antibody (orb7064)

Description	Tau protein (phospho-Ser199) antibody
Species/Host	Rabbit
Reactivity	Mouse, Rat
Conjugation	Unconjugated
Tested Applications	IHC-P, WB
Immunogen	KLH conjugated Synthesised phosphopeptide derived from human Tau around the phosphorylation site of Ser199 (YS(P-S)PG)
Target	phospho-Tau (Ser199)
Preservatives	0.01M TBS(pH7.4) with 1% rAlbumin, 0.03% Proclin300 and 50% Glycerol.
Form/Appearance	Liquid
Concentration	1mg/ml
Storage	Maintain refrigerated at 2-8°C for up to 2 weeks. For long term storage store at -20°C in small aliquots to prevent freeze-thaw cycles.
Note	For research use only
Isotype	IgG
Clonality	Polyclonal
MW	52/79 kDa
Uniprot ID	P10636
Dilution Range	WB=1:500-2000, IHC-P=1:100-500
Expiration Date	12 months from date of receipt.



Western blot:Cerebral cortex (Rat);Prima...



Western blot:Lane 1:Cerebrum (Mouse);Lan...