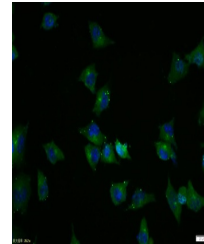


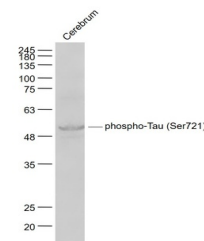
Product Datasheet

Tau protein (phospho-Ser721) antibody (orb7062)

Description	Tau protein (phospho-Ser721) antibody
Species/Host	Rabbit
Reactivity	Human, Mouse, Rat
Conjugation	Unconjugated
Tested Applications	ICC, IHC-P, WB
Immunogen	KLH conjugated Synthesised phosphopeptide derived from human Tau around the phosphorylation site of Ser721 (DT(p-S)PR)
Target	phospho-Tau (Ser721)
Preservatives	0.01M TBS(pH7.4) with 1% rAlbumin, 0.03% Proclin300 and 50% Glycerol.
Form/Appearance	Liquid
Concentration	1mg/ml
Storage	Maintain refrigerated at 2-8°C for up to 2 weeks. For long term storage store at -20°C in small aliquots to prevent freeze-thaw cycles.
Note	For research use only
Isotype	IgG
Clonality	Polyclonal
MW	52/79 kDa
Uniprot ID	P10636
Dilution Range	WB=1:500-2000, IHC-P=1:100-500, ICC=1:100, IHC-F=1:100-500, IF=1:100-500, ELISA=1:5000-10000
Expiration Date	12 months from date of receipt.



ICC analysis of SH-SY5Y cell using phospho-Tau antibody



Western blot: Cerebrum (Mouse); Primary: Anti-phospho-Tau (Ser721)