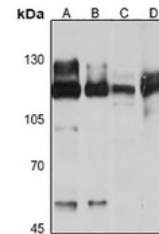


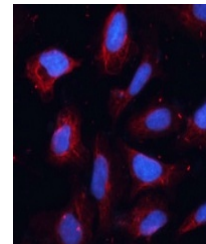
Product Datasheet

ANO1 antibody (orb705623)

Description	Rabbit polyclonal antibody to ANO1
Species/Host	Rabbit
Reactivity	Human, Mouse, Rat
Conjugation	Unconjugated
Tested Applications	IF, WB
Immunogen	Recombinant fusion protein of human ANO1. The exact sequence is proprietary.
Target	ANO1
Preservatives	Liquid in 0.42% Potassium phosphate, 0.87% Sodium chloride, pH 7.3, 30% glycerol, and 0.01% sodium azide.
Form/Appearance	Liquid in 0.42% Potassium phosphate, 0.87% Sodium chloride, pH 7.3, 30% glycerol, and 0.01% sodium azide.
Storage	Maintain refrigerated at 2-8°C for up to 2 weeks. For long term storage store at -20°C in small aliquots to prevent freeze-thaw cycles.
Note	For research use only
Clonality	Polyclonal
Source	Rabbit
Uniprot ID	Q5XXA6 , Q8BHY3
Entrez	101772 , 55107
Dilution Range	WB: 1:500-1:2000, IF: 1:50-1:200
Expiration Date	12 months from date of receipt.



Western blot analysis of ANO1 expression...



Immunofluorescent analysis of ANO1 stain...