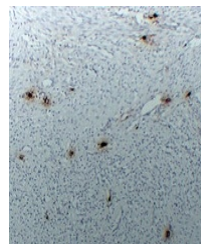


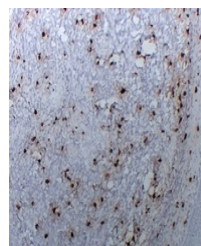
## Product Datasheet

### Tryptase alpha/beta antibody (orb705575)

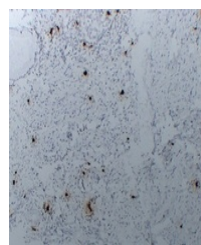
<b>Description</b>	Mouse monoclonal antibody to Tryptase alpha/beta
<b>Species/Host</b>	Mouse
<b>Reactivity</b>	Human
<b>Conjugation</b>	Unconjugated
<b>Tested Applications</b>	IH
<b>Immunogen</b>	KLH-conjugated synthetic peptide encompassing a sequence within human Tryptase alpha/beta. The exact sequence is proprietary.
<b>Target</b>	TPSAB1
<b>Preservatives</b>	Mouse IgG1. Liquid in PBS containing 50% glycerol, 0.2% rAlbumin and 0.01% sodium azide.
<b>Form/Appearance</b>	Mouse IgG1. Liquid in PBS containing 50% glycerol, 0.2% rAlbumin and 0.01% sodium azide.
<b>Storage</b>	Maintain refrigerated at 2-8°C for up to 2 weeks. For long term storage store at -20°C in small aliquots to prevent freeze-thaw cycles.
<b>Note</b>	For research use only
<b>Clonality</b>	Monoclonal
<b>Source</b>	Mouse
<b>Uniprot ID</b>	<a href="#">Q15661</a>
<b>Entrez</b>	<a href="#">7177</a>
<b>Dilution Range</b>	IHC-P: 1:100-1:300
<b>Expiration Date</b>	12 months from date of receipt.



Immunohistochemical analysis of Tryptase...



Immunohistochemical analysis of Tryptase...



Immunohistochemical analysis of Tryptase...