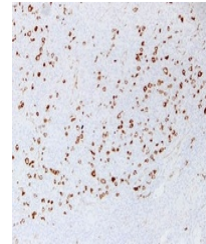


## Product Datasheet

### Fascin antibody (orb705569)

|                            |   |
|----------------------------|---|
| <b>Description</b>         | Mouse monoclonal antibody to Fascin   |
| <b>Species/Host</b>        | Mouse   |
| <b>Reactivity</b>          | Human   |
| <b>Conjugation</b>         | Unconjugated  |
| <b>Tested Applications</b> | IF, IH, WB  |
| <b>Immunogen</b>           | KLH-conjugated synthetic peptide encompassing a sequence within human Fascin. The exact sequence is proprietary.                        |
| <b>Target</b>              | FSCN1   |
| <b>Preservatives</b>       | Mouse IgG1. Liquid in PBS containing 50% glycerol, 0.2% rAlbumin and 0.01% sodium azide.  |
| <b>Form/Appearance</b>     | Mouse IgG1. Liquid in PBS containing 50% glycerol, 0.2% rAlbumin and 0.01% sodium azide.  |
| <b>Storage</b>             | Maintain refrigerated at 2-8°C for up to 2 weeks. For long term storage store at -20°C in small aliquots to prevent freeze-thaw cycles. |
| <b>Note</b>                | For research use only   |
| <b>Clonality</b>           | Monoclonal  |
| <b>Source</b>              | Mouse   |
| <b>Uniprot ID</b>          | <a href="#">Q16658</a>  |
| <b>Entrez</b>              | <a href="#">6624</a>  |
| <b>Dilution Range</b>      | WB: 1:500-1:1000, IHC-P: 1:100-1:300, IF: 1:100-1:500   |
| <b>Expiration Date</b>     | 12 months from date of receipt.   |



Immunohistochemical analysis of Fascin s...