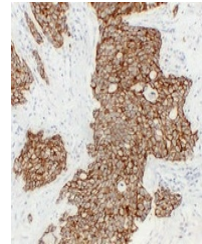


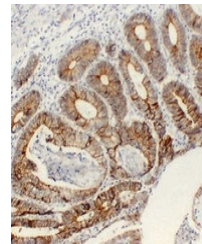
Product Datasheet

Cadherin pan antibody (orb705552)

Description	Mouse monoclonal antibody to Cadherin pan
Species/Host	Mouse
Reactivity	Human
Conjugation	Unconjugated
Tested Applications	IF, IH, WB
Immunogen	KLH-conjugated synthetic peptide encompassing a sequence within human Cadherin pan. The exact sequence is proprietary.
Target	CDH1; CDH2; CDH3; CDH4
Preservatives	Mouse IgG1. Liquid in PBS containing 50% glycerol, 0.2% rAlbumin and 0.01% sodium azide.
Form/Appearance	Mouse IgG1. Liquid in PBS containing 50% glycerol, 0.2% rAlbumin and 0.01% sodium azide.
Storage	Maintain refrigerated at 2-8°C for up to 2 weeks. For long term storage store at -20°C in small aliquots to prevent freeze-thaw cycles.
Note	For research use only
Clonality	Monoclonal
Source	Mouse
Uniprot ID	P12830 , P19022 , P22223 , P55283
Entrez	1001 , 1002 , 999 , 1000
Dilution Range	WB: 1:500-1:1000, IHC-P: 1:100-1:300, IF: 1:100-1:500
Expiration Date	12 months from date of receipt.



Immunohistochemical analysis of Cadherin...



Immunohistochemical analysis of Cadherin...