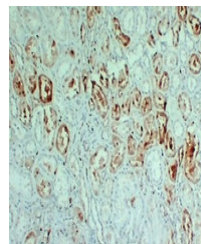


Product Datasheet

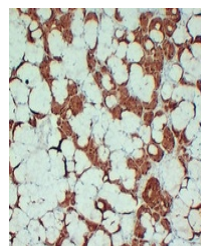
S100-A1 antibody (orb705542)

Description	Mouse monoclonal antibody to S100-A1
Species/Host	Mouse
Reactivity	Human
Conjugation	Unconjugated
Tested Applications	IF, IH
Immunogen	KLH-conjugated synthetic peptide encompassing a sequence within human S100-A1. The exact sequence is proprietary.
Target	S100A1
Preservatives	Mouse IgG1. Liquid in PBS containing 50% glycerol, 0.2% rAlbumin and 0.01% sodium azide.
Form/Appearance	Mouse IgG1. Liquid in PBS containing 50% glycerol, 0.2% rAlbumin and 0.01% sodium azide.
Storage	Shipped at 4°C. Upon delivery aliquot and store at -20°C for one year. Avoid freeze/thaw cycles.
Note	For research use only
Clonality	Monoclonal
Source	Mouse
Uniprot ID	P23297
Entrez	6271
Dilution Range	IHC-P: 1:100-1:300, IF: 1:100-1:500
Expiration Date	12 months from date of receipt.



Immunohistochemical analysis of S100-A1

...



Immunohistochemical analysis of S100-A1

...