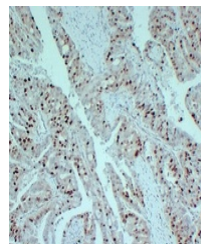


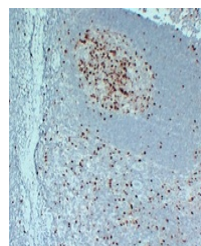
## Product Datasheet

### Topoisomerase 2 alpha antibody (orb705505)

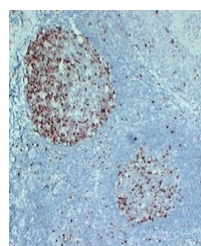
<b>Description</b>	Mouse monoclonal antibody to Topoisomerase 2 alpha
<b>Species/Host</b>	Mouse
<b>Reactivity</b>	Human
<b>Conjugation</b>	Unconjugated
<b>Tested Applications</b>	IF, IH, WB
<b>Immunogen</b>	KLH-conjugated synthetic peptide encompassing a sequence within human Topoisomerase 2 alpha. The exact sequence is proprietary.
<b>Target</b>	TOP2A
<b>Preservatives</b>	Mouse IgG2b. Liquid in PBS containing 50% glycerol, 0.2% rAlbumin and 0.01% sodium azide.
<b>Form/Appearance</b>	Mouse IgG2b. Liquid in PBS containing 50% glycerol, 0.2% rAlbumin and 0.01% sodium azide.
<b>Storage</b>	Maintain refrigerated at 2-8°C for up to 2 weeks. For long term storage store at -20°C in small aliquots to prevent freeze-thaw cycles.
<b>Note</b>	For research use only
<b>Clonality</b>	Monoclonal
<b>Source</b>	Mouse
<b>Uniprot ID</b>	<b>P11388</b>
<b>Entrez</b>	<b>7153</b>
<b>Dilution Range</b>	WB: 1:500-1:1000, IHC-P: 1:100-1:300, IF: 1:100-1:500
<b>Expiration Date</b>	12 months from date of receipt.



Immunohistochemical analysis of Topoisom...



Immunohistochemical analysis of Topoisom...



Immunohistochemical analysis of Topoisom...