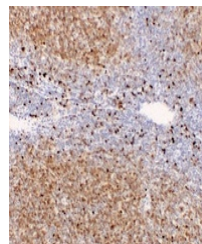


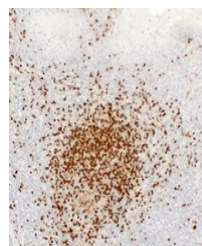
Product Datasheet

TCL1A antibody (orb705504)

| | |
|----------------------------|---|
| Description | Mouse monoclonal antibody to TCL1A |
| Species/Host | Mouse |
| Reactivity | Human |
| Conjugation | Unconjugated |
| Tested Applications | IH |
| Immunogen | KLH-conjugated synthetic peptide encompassing a sequence within human TCL1A. The exact sequence is proprietary. |
| Target | TCL1A |
| Preservatives | Mouse IgG1. Liquid in PBS containing 50% glycerol, 0.2% rAlbumin and 0.01% sodium azide. |
| Form/Appearance | Mouse IgG1. Liquid in PBS containing 50% glycerol, 0.2% rAlbumin and 0.01% sodium azide. |
| Storage | Shipped at 4°C. Upon delivery aliquot and store at -20°C for one year. Avoid freeze/thaw cycles. |
| Note | For research use only |
| Clonality | Monoclonal |
| Source | Mouse |
| Uniprot ID | P56279 |
| Entrez | 8115 |
| Dilution Range | IHC-P: 1:100-1:300 |
| Expiration Date | 12 months from date of receipt. |



Immunohistochemical analysis of TCL1A st...



Immunohistochemical analysis of TCL1A st...