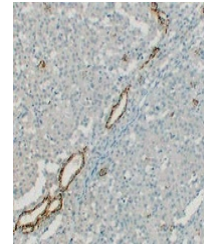


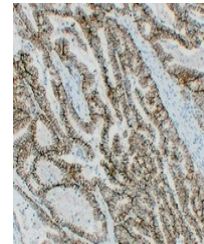
Product Datasheet

Claudin 7 antibody (orb705494)

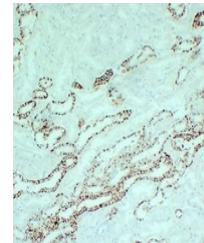
Description	Mouse monoclonal antibody to Claudin 7
Species/Host	Mouse
Reactivity	Human
Conjugation	Unconjugated
Tested Applications	IH, WB
Immunogen	KLH-conjugated synthetic peptide encompassing a sequence within human Claudin 7. The exact sequence is proprietary.
Target	CLDN7
Preservatives	Mouse IgG2a. Liquid in PBS containing 50% glycerol, 0.2% rAlbumin and 0.01% sodium azide.
Form/Appearance	Mouse IgG2a. Liquid in PBS containing 50% glycerol, 0.2% rAlbumin and 0.01% sodium azide.
Storage	Maintain refrigerated at 2-8°C for up to 2 weeks. For long term storage store at -20°C in small aliquots to prevent freeze-thaw cycles.
Note	For research use only
Clonality	Monoclonal
Source	Mouse
Uniprot ID	O95471
Entrez	1366
Dilution Range	WB: 1:500-1:1000, IHC-P: 1:100-1:300
Expiration Date	12 months from date of receipt.



Immunohistochemical analysis of Claudin ...



Immunohistochemical analysis of Claudin ...



Immunohistochemical analysis of Claudin ...