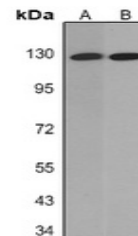


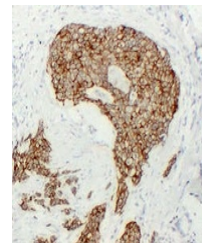
Product Datasheet

Cadherin pan antibody (orb705483)

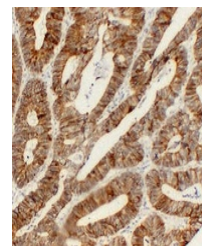
| | |
|----------------------------|---|
| Description | Mouse monoclonal antibody to Cadherin pan |
| Species/Host | Mouse |
| Reactivity | Human |
| Conjugation | Unconjugated |
| Tested Applications | IH, WB |
| Immunogen | KLH-conjugated synthetic peptide encompassing a sequence within human Cadherin pan. The exact sequence is proprietary. |
| Target | CDH1 |
| Preservatives | Mouse IgG1. Liquid in PBS containing 50% glycerol, 0.2% rAlbumin and 0.01% sodium azide. |
| Form/Appearance | Mouse IgG1. Liquid in PBS containing 50% glycerol, 0.2% rAlbumin and 0.01% sodium azide. |
| Storage | Maintain refrigerated at 2-8°C for up to 2 weeks. For long term storage store at -20°C in small aliquots to prevent freeze-thaw cycles. |
| Note | For research use only |
| Clonality | Monoclonal |
| Source | Mouse |
| Uniprot ID | P12830 , P19022 , P22223 , P55283 |
| Entrez | 1001 , 1002 , 999 , 1000 |
| Dilution Range | WB: 1:500-1:1000, IHC-P: 1:100-1:300 |
| Expiration Date | 12 months from date of receipt. |



Western blot analysis of Cadherin pan ex...



Immunohistochemical analysis of Cadherin...



Immunohistochemical analysis of Cadherin...