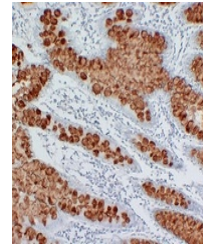


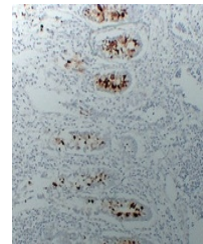
Product Datasheet

MUC2 antibody (orb705457)

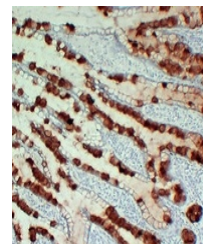
Description	Mouse monoclonal antibody to MUC2
Species/Host	Mouse
Reactivity	Human
Conjugation	Unconjugated
Tested Applications	IH
Immunogen	KLH-conjugated synthetic peptide encompassing a sequence within human MUC2. The exact sequence is proprietary.
Target	MUC2
Preservatives	Mouse IgG1. Liquid in PBS containing 50% glycerol, 0.2% rAlbumin and 0.01% sodium azide.
Form/Appearance	Mouse IgG1. Liquid in PBS containing 50% glycerol, 0.2% rAlbumin and 0.01% sodium azide.
Storage	Maintain refrigerated at 2-8°C for up to 2 weeks. For long term storage store at -20°C in small aliquots to prevent freeze-thaw cycles.
Note	For research use only
Clonality	Monoclonal
Source	Mouse
Uniprot ID	Q02817
Entrez	4583
Dilution Range	IHC-P: 1:100-1:300
Expiration Date	12 months from date of receipt.



Immunohistochemical analysis of MUC2 staining in tissue sections.



Immunohistochemical analysis of MUC2 staining in tissue sections.



Immunohistochemical analysis of MUC2 staining in tissue sections.