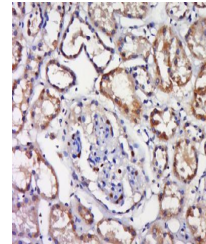


Product Datasheet

TAK1 (phospho-Ser192) antibody (orb7051)

Description	TAK1 (phospho-Ser192) antibody
Species/Host	Rabbit
Reactivity	Human, Rat
Conjugation	Unconjugated
Tested Applications	ICC
Immunogen	KLH conjugated Synthesised phosphopeptide derived from human TAK1 around the phosphorylation site of Ser192 (KG(p-S)AA)
Target	Phospho-TAK1 (Ser192)
Preservatives	0.01M TBS(pH7.4) with 1% rAlbumin, 0.03% Proclin300 and 50% Glycerol.
Form/Appearance	Liquid
Concentration	1mg/ml
Storage	Shipped at 4°C. Store at -20 °C for one year. Avoid repeated freeze/thaw cycles.
Note	For research use only
Isotype	IgG
Clonality	Polyclonal
MW	67 kDa
Uniprot ID	O43318
Dilution Range	ICC=1:100, IHC-P=1:100-500, IHC-F=1:100-500, IF=1:100-500, ELISA=1:5000-10000
Expiration Date	12 months from date of receipt.



Immunohistochemical staining of human ki...