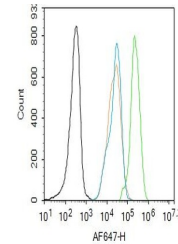


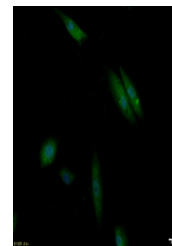
Product Datasheet

IRS1 (phospho-Tyr1229) antibody (orb704537)

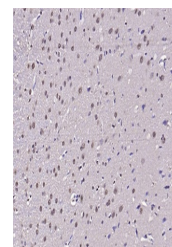
Description	IRS1 (phospho-Tyr1229) antibody
Species/Host	Rabbit
Reactivity	Human, Mouse, Rat
Conjugation	Unconjugated
Tested Applications	FC, ICC, IHC-P
Immunogen	KLH conjugated synthesised phosphopeptide derived from human IRS1 around the phosphorylation site of Tyr1229 (R(p-S)SE)
Target	phospho-IRS1 (Tyr1229)
Preservatives	0.01M TBS(pH7.4) with 1% rAlbumin, 0.03% Proclin300 and 50% Glycerol.
Form/Appearance	Liquid
Concentration	1mg/ml
Storage	Maintain refrigerated at 2-8°C for up to 2 weeks. For long term storage store at -20°C in small aliquots to prevent freeze-thaw cycles.
Note	For research use only
Isotype	IgG
Clonality	Polyclonal
MW	132 kDa
Uniprot ID	P35568
Dilution Range	IHC-P=1:100-500, ICC=1:100, Flow-Cyt=2ug/Test, IHC-F=1:100-500, IF=1:100-500
Expiration Date	12 months from date of receipt.



Flow cytometry of HepG2. Primary Antibody...



ICC analysis of A549 cell using phospho-...



IHC-P analysis of rat brain using phospho-...