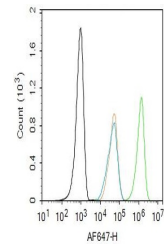


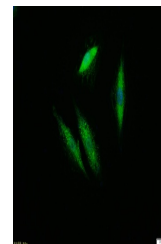
## Product Datasheet

### ERK1 antibody (orb704524)

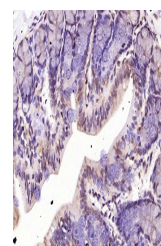
|                            |   |
|----------------------------|---|
| <b>Description</b>         | ERK1 antibody   |
| <b>Species/Host</b>        | Rabbit  |
| <b>Reactivity</b>          | Human   |
| <b>Conjugation</b>         | Unconjugated  |
| <b>Tested Applications</b> | FC, ICC, IF, IHC-Fr, IHC-P, WB  |
| <b>Immunogen</b>           | KLH conjugated synthetic peptide derived from human ERK1/2  |
| <b>Target</b>              | ERK1/2  |
| <b>Preservatives</b>       | 0.01M TBS(pH7.4) with 1% rAlbumin, 0.03% Proclin300 and 50% Glycerol.   |
| <b>Form/Appearance</b>     | Liquid  |
| <b>Concentration</b>       | 1mg/ml  |
| <b>Storage</b>             | Maintain refrigerated at 2-8°C for up to 2 weeks. For long term storage store at -20°C in small aliquots to prevent freeze-thaw cycles. |
| <b>Note</b>                | For research use only   |
| <b>Isotype</b>             | IgG   |
| <b>Clonality</b>           | Recombinant   |
| <b>MW</b>                  | 42/44 kDa   |
| <b>Uniprot ID</b>          | <a href="#">Q63844</a>  |
| <b>Dilution Range</b>      | WB=1:500-2000, IHC-P=1:50-200, IHC-F=1:50-200, ICC/IF=1:100, IF=1:50-200, Flow-Cyt=1ug/Test   |
| <b>Expiration Date</b>     | 12 months from date of receipt.   |



Flow cytometry of Hela.Primary Antibody ...



ICC analysis of A549 cell using ERK1/2 m...



IHC-P analysis of rat colon using ERK1 2...