

---

## Product Datasheet

### Cyclophilin B(Loading Control) antibody (orb704516)

**Description**

Cyclophilin B(Loading Control) antibody

**Species/Host**

Rabbit

**Reactivity**

Human, Mouse, Rat

**Conjugation**

Unconjugated

**Tested Applications**

IHC-P, WB

**Immunogen**

Recombinant human Cyclophilin B (C terminus)

**Target**

Cyclophilin B(Loading Control)

**Preservatives**

0.01M TBS(pH7.4) with 1% rAlbumin, 0.03% Proclin300 and 50% Glycerol.

**Form/Appearance**

Liquid

**Concentration**

1mg/ml

**Storage**

Maintain refrigerated at 2-8°C for up to 2 weeks. For long term storage store at -20°C in small aliquots to prevent freeze-thaw cycles.

**Note**

For research use only

**Isotype**

IgG

**Clonality**

Recombinant

**MW**

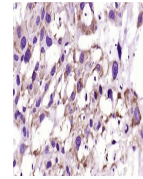
20 kDa

**Uniprot ID**
**P23284**
**Dilution Range**

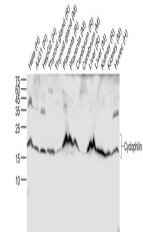
WB=1:500-1000, IHC-P=1:400-800

**Expiration Date**

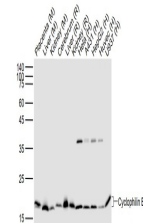
12 months from date of receipt.



IHC-P analysis of rat placenta using Cyclophilin B antibody.



Western blot analysis using Anti-Cyclophilin B antibody.



Western blot analysis using Anti-Cyclophilin B antibody.