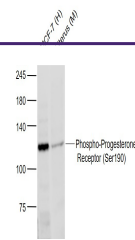

Product Datasheet

Progesterone Receptor (phospho-Ser190) antibody (orb704511)

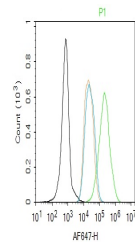
Description

Progesterone Receptor (phospho-Ser190)

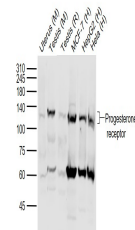
Species/Host	Rabbit
Reactivity	Human, Mouse, Rat
Conjugation	Unconjugated
Tested Applications	FC, WB
Immunogen	KLH conjugated Synthesised phosphopeptide derived from rat Progesterone Receptor around the phosphorylation site of Ser190 (GL(p-S)P)
Target	Phospho-Progesterone Receptor (Ser190)
Preservatives	0.01M TBS(pH7.4) with 1% rAlbumin, 0.03% Proclin300 and 50% Glycerol.
Form/Appearance	Liquid
Concentration	1mg/ml
Storage	Shipped at 4°C. Store at -20 °C for one year. Avoid repeated freeze/thaw cycles.
Note	For research use only
Isotype	IgG
Clonality	Polyclonal
MW	99 kDa
Uniprot ID	P06401
Dilution Range	WB=1:500-2000, Flow-Cyt=1ug/Test
Expiration Date	12 months from date of receipt.



Sample:
Lane 1:
MCF-7
(Human)
Cell Lysat...



Blank
control:
MCF7.
Primary
Antibody
(g...



Sample:
Lane 1:
Uterus
(Mouse)
Lysate at...