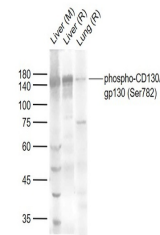


Product Datasheet

CD130 antibody (orb704492)

Description	CD130 antibody
Species/Host	Rabbit
Reactivity	Mouse, Rat
Conjugation	Unconjugated
Tested Applications	WB
Immunogen	KLH conjugated Synthesised phosphopeptide derived from human gp130 around the phosphorylation site of Ser 782 (SE(p-S)TQ)
Target	phospho-CD130/gp130 (Ser782)
Preservatives	0.01M TBS(pH7.4) with 1% rAlbumin, 0.03% Proclin300 and 50% Glycerol.
Form/Appearance	Liquid
Concentration	1mg/ml
Storage	Maintain refrigerated at 2-8°C for up to 2 weeks. For long term storage store at -20°C in small aliquots to prevent freeze-thaw cycles.
Note	For research use only
Isotype	IgG
Clonality	Polyclonal
MW	99 kDa
Uniprot ID	P40189
Dilution Range	WB=1:500-2000
Expiration Date	12 months from date of receipt.



Western blot: Lane 1: Liver (Mouse); Lane 2: Lung (Mouse)