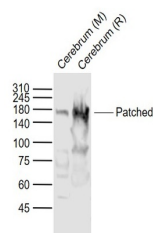


Product Datasheet

Patched antibody (orb704374)

Description	Patched antibody
Species/Host	Rabbit
Reactivity	Mouse, Rat
Conjugation	Unconjugated
Tested Applications	WB
Immunogen	KLH conjugated synthetic peptide derived from human Patched (1-100/1447 aa)
Target	Patched
Preservatives	0.01M TBS(pH7.4) with 1% rAlbumin, 0.03% Proclin300 and 50% Glycerol.
Form/Appearance	Liquid
Concentration	1mg/ml
Storage	Shipped at 4°C. Store at -20°C for one year. Avoid repeated freeze/thaw cycles.
Note	For research use only
Isotype	IgG
Clonality	Polyclonal
MW	161 kDa
Uniprot ID	Q13635
Dilution Range	WB=1:500-2000
Expiration Date	12 months from date of receipt.



Western blot: Lane 1: Cerebrum (Mouse); Lane 2: Cerebrum (Rat)