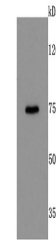


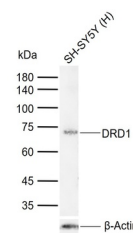
Product Datasheet

Dopamine Receptor D1 antibody (orb704352)

Description	Dopamine Receptor D1 antibody
Species/Host	Rabbit
Reactivity	Human, Mouse, Rat
Conjugation	Unconjugated
Tested Applications	ICC, IHC-P, WB
Immunogen	C-terminus human Dopamine Receptor D1
Target	DRD1
Preservatives	0.01M TBS(pH7.4) with 1% rAlbumin, 0.03% Proclin300 and 50% Glycerol.
Form/Appearance	Liquid
Concentration	1mg/ml
Storage	Maintain refrigerated at 2-8°C for up to 2 weeks. For long term storage store at -20°C in small aliquots to prevent freeze-thaw cycles.
Note	For research use only
Isotype	IgG
Clonality	Recombinant
MW	50 kDa
Uniprot ID	P21728
Dilution Range	WB=1:500-1000, IHC-P=1:50-200, ICC=1:50, IHC-F=1:50-200, IF=1:50-200
Expiration Date	12 months from date of receipt.



Western blot: Lane 1: mouse kidney cells; P...



Western blot: Lane 1: Human SH-SY5Y cell; P...