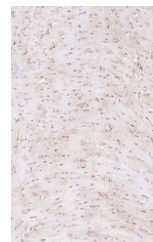


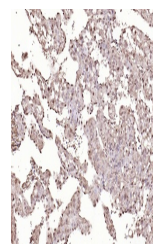
Product Datasheet

TSG101 antibody (orb704315)

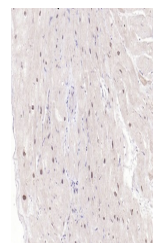
Description	TSG101 antibody
Species/Host	Rabbit
Reactivity	Human, Mouse, Rat
Conjugation	Unconjugated
Tested Applications	IHC-P, WB
Immunogen	KLH conjugated synthetic peptide derived from human TSG101 (30-70/390 aa)
Target	TSG101
Preservatives	0.01M TBS(pH7.4) with 1% rAlbumin, 0.03% Proclin300 and 50% Glycerol.
Form/Appearance	Liquid
Concentration	1mg/ml
Storage	Maintain refrigerated at 2-8°C for up to 2 weeks. For long term storage store at -20°C in small aliquots to prevent freeze-thaw cycles.
Note	For research use only
Isotype	IgG
Clonality	Recombinant
MW	44 kDa
Uniprot ID	Q99816
Dilution Range	WB=1:500-2000, IHC-P=1:50-200
Expiration Date	12 months from date of receipt.



IHC-P analysis of rat heart using TSG101...



IHC-P analysis of mouse placenta using T...



IHC-P analysis of human heart using TSG1...