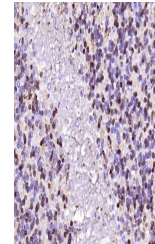


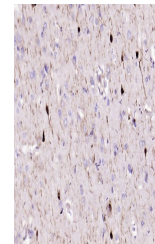
Product Datasheet

Calretinin antibody (orb704297)

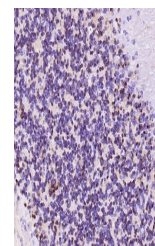
Description	Calretinin antibody
Species/Host	Rabbit
Reactivity	Human, Mouse, Rat
Conjugation	Unconjugated
Tested Applications	IHC-P
Immunogen	KLH conjugated synthetic peptide derived from human Calretinin
Target	Calretinin
Preservatives	0.01M TBS(pH7.4) with 1% rAlbumin, 0.03% Proclin300 and 50% Glycerol.
Form/Appearance	Liquid
Concentration	1mg/ml
Storage	Maintain refrigerated at 2-8°C for up to 2 weeks. For long term storage store at -20°C in small aliquots to prevent freeze-thaw cycles.
Note	For research use only
Isotype	IgG
Clonality	Recombinant
MW	29 kDa
Uniprot ID	P22676
Dilution Range	IHC-P=1:50-200, WB=1:200-500, IHC-F=1:50-200
Expiration Date	12 months from date of receipt.



IHC-P analysis of rat cerebellum using Calretinin antibody.



IHC-P analysis of human brain using Calretinin antibody.



IHC-P analysis of mouse cerebellum using Calretinin antibody.