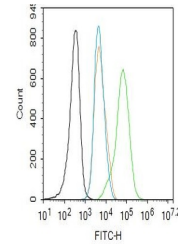


Product Datasheet

C-Jun (phospho-Thr91+Thr93) antibody (orb704189)

Description	C-Jun (phospho-Thr91+Thr93) antibody
Species/Host	Rabbit
Reactivity	Human
Conjugation	Unconjugated
Tested Applications	FC
Immunogen	KLH conjugated Synthesised phosphopeptide derived from human c-Jun around the phosphorylation site of Thr91/93 (TT(p-T)P(p-T)PT)
Target	phospho-c-Jun (Thr91+Thr93)
Preservatives	0.01M TBS(pH7.4) with 1% rAlbumin, 0.03% Proclin300 and 50% Glycerol.
Form/Appearance	Liquid
Concentration	1mg/ml
Storage	Maintain refrigerated at 2-8°C for up to 2 weeks. For long term storage store at -20°C in small aliquots to prevent freeze-thaw cycles.
Note	For research use only
Isotype	IgG
Clonality	Polyclonal
MW	36 kDa
Uniprot ID	P05412
Dilution Range	Flow-Cyt=1ug/Test
Expiration Date	12 months from date of receipt.



Flow cytometry of HepG2.Primary Antibody...