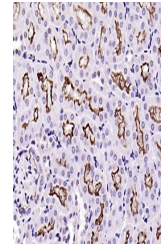


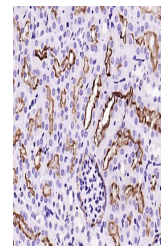
Product Datasheet

ACE2 antibody (orb704176)

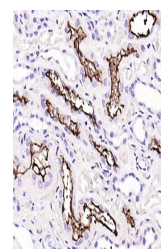
Description	ACE2 antibody
Species/Host	Rabbit
Reactivity	Human, Mouse, Rat
Conjugation	Unconjugated
Tested Applications	ICC, IHC-P, WB
Immunogen	KLH conjugated synthetic peptide derived from human ACE2 (180-240/805 aa)
Target	ACE2
Preservatives	0.01M TBS(pH7.4) with 1% rAlbumin, 0.03% Proclin300 and 50% Glycerol.
Form/Appearance	Liquid
Concentration	1mg/ml
Storage	Maintain refrigerated at 2-8°C for up to 2 weeks. For long term storage store at -20°C in small aliquots to prevent freeze-thaw cycles.
Note	For research use only
Isotype	IgG
Clonality	Recombinant
MW	92 kDa
Uniprot ID	Q9BYF1
Dilution Range	WB=1:500-2000, IHC-P=1:50-200, ICC=1:50, IHC-F=1:50-200, IF=1:100-200, ELISA=1:5000-10000
Expiration Date	12 months from date of receipt.



IHC-P analysis of mouse kidney using ACE...



IHC-P analysis of rat kidney using ACE2 ...



IHC-P analysis of Human kidney using ACE...