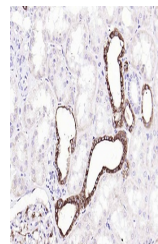


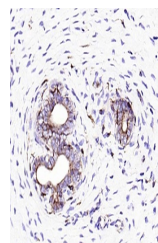
Product Datasheet

Ephrin B2 antibody (orb704166)

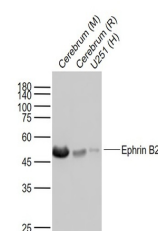
Description	Ephrin B2 antibody
Species/Host	Rabbit
Reactivity	Human, Rat
Conjugation	Unconjugated
Tested Applications	IHC-P, WB
Immunogen	KLH conjugated synthetic peptide derived from human Ephrin B2
Target	Ephrin B2
Preservatives	0.01M TBS(pH7.4) with 1% rAlbumin, 0.03% Proclin300 and 50% Glycerol.
Form/Appearance	Liquid
Concentration	1mg/ml
Storage	Maintain refrigerated at 2-8°C for up to 2 weeks. For long term storage store at -20°C in small aliquots to prevent freeze-thaw cycles.
Note	For research use only
Isotype	IgG
Clonality	Recombinant
MW	34 kDa
Uniprot ID	P52799
Dilution Range	WB=1:500-1000, IHC-P=1:400-800
Expiration Date	12 months from date of receipt.



IHC-P analysis of Human kidney using Eph...



IHC-P analysis of rat uterus using Ephri...



Western blot: Lane 1:Cerebrum (Mouse); Lan...