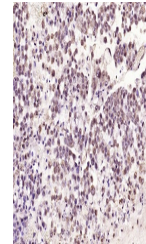


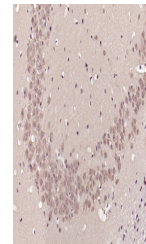
Product Datasheet

PAK1 (phospho-Ser204) antibody (orb704165)

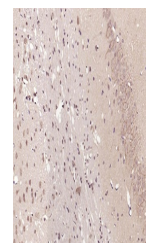
Description	PAK1 (phospho-Ser204) antibody
Species/Host	Rabbit
Reactivity	Human, Mouse, Rat
Conjugation	Unconjugated
Tested Applications	IHC-P, WB
Immunogen	KLH conjugated synthesised phosphopeptide derived from human PAK1 around the phosphorylation site of Ser204 (TR(p-S)VI)
Target	phospho-PAK1 (Ser204)
Preservatives	0.01M TBS(pH7.4) with 1% rAlbumin, 0.03% Proclin300 and 50% Glycerol.
Form/Appearance	Liquid
Concentration	1mg/ml
Storage	Maintain refrigerated at 2-8°C for up to 2 weeks. For long term storage store at -20°C in small aliquots to prevent freeze-thaw cycles.
Note	For research use only
Isotype	IgG
Clonality	Polyclonal
MW	61 kDa
Uniprot ID	Q13153
Dilution Range	WB=1:500-2000, IHC-P=1:100-500
Expiration Date	12 months from date of receipt.



IHC-P analysis of human cervical carcino...



IHC-P analysis of mouse brain using phos...



IHC-P analysis of rat brain using phosph...