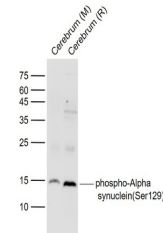


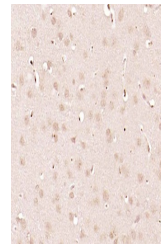
Product Datasheet

Alpha Synuclein (phospho-Ser129) antibody (orb704162)

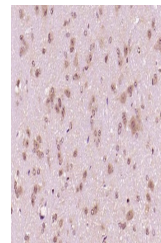
Description	Alpha Synuclein (phospho-Ser129) antibody
Species/Host	Mouse
Reactivity	Human, Mouse, Rat
Conjugation	Unconjugated
Tested Applications	IHC-P, WB
Immunogen	KLH conjugated Synthesised phosphopeptide derived from human SNCA around the phosphorylation site of Ser129 (MP(p-S)EE)
Target	phospho-Alpha synuclein (Ser129)
Preservatives	0.01M TBS(pH7.4) with 1% rAlbumin, 0.03% Proclin300 and 50% Glycerol.
Form/Appearance	Liquid
Concentration	1mg/ml
Storage	Maintain refrigerated at 2-8°C for up to 2 weeks. For long term storage store at -20°C in small aliquots to prevent freeze-thaw cycles.
Note	For research use only
Isotype	IgG
Clonality	Monoclonal
MW	15 kDa
Uniprot ID	Q16143
Dilution Range	WB=1:500-2000, IHC-P=1:400-800
Expiration Date	12 months from date of receipt.



Western blot: Lane 1: Cerebrum (Mouse); Lan...



IHC-P analysis of rat brain using phospho...



IHC-P analysis of Mouse brain using phos...