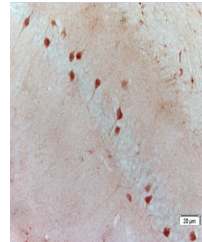


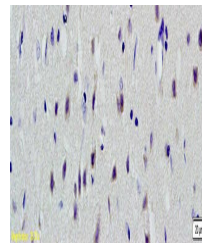
Product Datasheet

alpha synuclein (phospho-Ser129) antibody (orb7038)

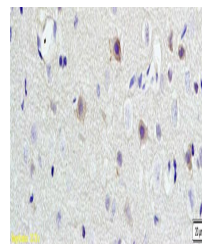
Description	alpha synuclein (phospho-Ser129) antibody
Species/Host	Rabbit
Reactivity	Human, Mouse, Rat
Conjugation	Unconjugated
Tested Applications	FC, WB
Immunogen	KLH conjugated Synthesised phosphopeptide derived from human SNCA around the phosphorylation site of Ser129 (MP(p-S)EE)
Target	phospho-Alpha synuclein (Ser129)
Preservatives	0.01M TBS(pH7.4) with 1% rAlbumin, 0.03% Proclin300 and 50% Glycerol.
Form/Appearance	Liquid
Concentration	1mg/ml
Storage	Shipped at 4°C. Store at -20 °C for one year. Avoid repeated freeze/thaw cycles.
Note	For research use only
Isotype	IgG
Clonality	Polyclonal
MW	15 kDa
Uniprot ID	Q16143
Dilution Range	WB=1:500-2000, Flow-Cyt=1ug/Test, IHC-P=1:100-500, IHC-F=1:100-500, IF=1:100-500, ELISA=1:5000-10000
Expiration Date	12 months from date of receipt.



Immunohistochemical analysis of frozen m...



Immunohistochemical analysis of paraffin...



Immunohistochemical analysis of paraffin...