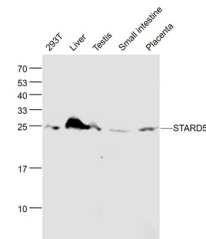


Product Datasheet

STARD5 antibody (orb7015)

Description	STARD5 antibody
Species/Host	Rabbit
Reactivity	Human, Mouse
Conjugation	Unconjugated
Tested Applications	WB
Immunogen	KLH conjugated synthetic peptide derived from human STARD5 (51-150/213 aa)
Target	STARD5
Preservatives	0.01M TBS(pH7.4) with 1% rAlbumin, 0.03% Proclin300 and 50% Glycerol.
Form/Appearance	Liquid
Concentration	1mg/ml
Storage	Shipped at 4°C. Store at -20°C for one year. Avoid repeated freeze/thaw cycles.
Note	For research use only
Isotype	IgG
Clonality	Polyclonal
MW	23 kDa
Uniprot ID	Q9NSY2
Dilution Range	WB=1:500-2000
Expiration Date	12 months from date of receipt.



Western blot:293T(Human) Cell;Liver(Mous...