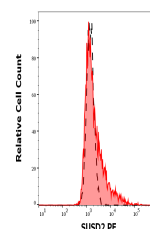


Product Datasheet

SUSD2 antibody (PE) (orb699844)

Description	Mouse monoclonal antibody against SUSD2 conjugated to PE
Reactivity	Human
Conjugation	PE
Tested Applications	FC
Immunogen	WERI-RB-1 retinoblastoma cells
Target	SUSD2
Preservatives	Stabilizing phosphate buffered saline (PBS), pH 7.4, 15 mM sodium azide
Concentration	0.1 mg/ml
Storage	Store at 2-8°C. Protect from prolonged exposure to light. Do not freeze.
Note	For research use only
Application notes	Flow cytometry: Recommended dilution: 2-5 µg/ml
Isotype	Mouse IgG1
Clonality	Monoclonal
Purity	Purified antibody is conjugated with R-phycoerythrin (PE) under optimum conditions. Unconjugated antibody and free fluorochrome are removed by size-exclusion chromatography.
Uniprot ID	Q9UGT4
Entrez	56241
Dilution Range	Flow cytometry: Recommended dilution: 2-5 µg/ml
Expiration Date	12 months from date of receipt.



Separation of HeLa cells stained using a...