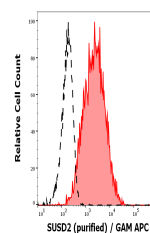


Product Datasheet

SUSD2 antibody (orb699842)

Description	Mouse monoclonal antibody to SUSD2
Reactivity	Human
Conjugation	Unconjugated
Tested Applications	FC, ICC
Immunogen	WERI-RB-1 retinoblastoma cells
Target	SUSD2
Preservatives	Phosphate buffered saline (PBS), pH 7.4, 15 mM sodium azide
Concentration	1 mg/ml
Storage	Store at 2-8°C. Do not freeze.
Note	For research use only
Application notes	Flow cytometry: Recommended dilution: 1-4 µg/ml
Isotype	Mouse IgG1
Clonality	Monoclonal
Purity	Purified by protein-A affinity chromatography.
Uniprot ID	Q9UGT4
Entrez	56241
Dilution Range	Flow cytometry: Recommended dilution: 1-4 µg/ml
Expiration Date	12 months from date of receipt.



Separation of MCF-7 cells stained using

...