

---

## Product Datasheet

### EGF Receptor / EGFR Antibody-L858R Mutant Specific (orb699812)

**Description**

Receptor tyrosine kinase binding ligands of the



cascades...

**Species/Host**

Rabbit

**Reactivity**

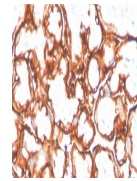
Human

**Conjugation**

Unconjugated

**Tested Applications**

IHC-P



IHC staining of FFPE human placenta with...

**Immunogen**

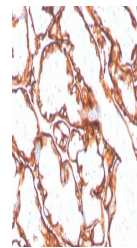
A portion of amino acids 800-900 of EGF receptor (mutated L858R) was used as the immunogen for the recombinant EGFR antibody.

**Preservatives**

0.2 mg/ml in 1X PBS with 0.1 mg/ml rAlbumin (US sourced), 0.05% sodium azide

**Storage**

Store the recombinant EGFR antibody at 2-8°C (with azide) or aliquot and store at -20°C or colder (without azide).


**Note**

For research use only

**Application notes**

Optimal dilution of the recombinant EGFR antibody should be determined by the researcher.

IHC staining of FFPE human placenta with...

**Formula**

0.2 mg/ml in 1X PBS with 0.1 mg/ml BSA (US sourced), 0.05% sodium azide

**Isotype**

Rabbit IgG

**Clonality**

Recombinant

**Purity**

Protein A affinity chromatography

**Uniprot ID**
**P00533**
**Hazard Information**

This recombinant EGFR antibody is available for research use only.

**Dilution Range**

Immunohistochemistry (FFPE): 1-2ug/ml for 30 minutes at RT

**Expiration Date**

12 months from date of receipt.