
Product Datasheet

Calponin-1 Antibody (orb699810)

Description

Calponin-1/CNN1, a 33 kDa polypeptide, is a

...

Species/Host

Rabbit

Reactivity

Human

Conjugation

Unconjugated

Tested

IHC-P

Applications
Immunogen

A synthetic peptide from the C-terminus of the human protein was used as the immunogen for the recombinant CNN1 antibody.

Preservatives

0.2 mg/ml in 1X PBS with 0.1 mg/ml rAlbumin (US sourced), 0.05% sodium azide

Storage

Store the recombinant CNN1 antibody at 2-8°C (with azide) or aliquot and store at -20°C or colder (without azide).

Note

For research use only

Application notes

Optimal dilution of the recombinant CNN1 antibody should be determined by the researcher.

Formula

0.2 mg/ml in 1X PBS with 0.1 mg/ml BSA (US sourced), 0.05% sodium azide

Isotype

Rabbit IgG

Clonality

Recombinant

Purity

Protein A affinity chromatography

Uniprot ID

P51911

Hazard
Information

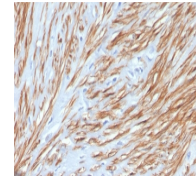
This recombinant CNN1 antibody is available for research use only.

Dilution Range

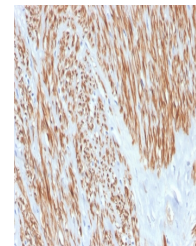
Immunohistochemistry (FFPE): 1-2ug/ml for 30 minutes at RT

Expiration Date

12 months from date of receipt.



IHC staining of
FFPE human
leiomyosarcom...



IHC staining of
FFPE human
leiomyosarcom...