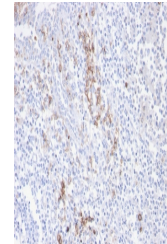


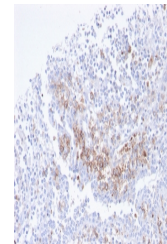
## Product Datasheet

### CD38 Antibody (orb699808)

<b>Description</b>	CD38 is a type II transmembrane glycoprotein that is present on early B- and T-cell lineages and act...
<b>Species/Host</b>	Rabbit
<b>Reactivity</b>	Human
<b>Conjugation</b>	Unconjugated
<b>Tested Applications</b>	IHC-P, WB
<b>Immunogen</b>	A portion of amino acids 200-300 from the human protein was used as the immunogen for the recombinant CD38 antibody.
<b>Preservatives</b>	0.2 mg/ml in 1X PBS with 0.1 mg/ml rAlbumin (US sourced), 0.05% sodium azide
<b>Storage</b>	Store the recombinant CD38 antibody at 2-8°C (with azide) or aliquot and store at -20°C or colder (without azide).
<b>Note</b>	For research use only
<b>Application notes</b>	Optimal dilution of the recombinant CD38 antibody should be determined by the researcher.
<b>Formula</b>	0.2 mg/ml in 1X PBS with 0.1 mg/ml BSA (US sourced), 0.05% sodium azide
<b>Isotype</b>	Rabbit IgG
<b>Clonality</b>	Recombinant
<b>Purity</b>	Protein A affinity chromatography
<b>Uniprot ID</b>	<b>P28907</b>
<b>Hazard Information</b>	This recombinant CD38 antibody is available for research use only.
<b>Dilution Range</b>	Western blot: 2-4ug/ml, Immunohistochemistry (FFPE): 1-2ug/ml for 30 minutes at RT
<b>Expiration Date</b>	12 months from date of receipt.



IHC staining of FFPE human tonsil with r...



IHC staining of FFPE human tonsil with r...



Western blot testing of human Raji cell ...