

---

## Product Datasheet

### Napsin A Antibody (orb699806)

**Description**

Napsin is a pepsin-like aspartic proteinase connected with


**Species/Host**

Rabbit

**Reactivity**

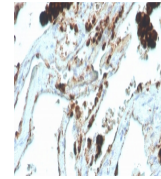
Human

**Conjugation**

Unconjugated

**Tested Applications**

IHC-P



IHC staining of FFPE human lung adenocar...

**Immunogen**

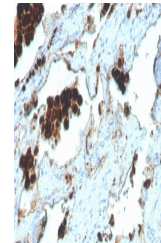
A portion of amino acids 50-150 from the human protein was used as the immunogen for the recombinant Napsin A antibody.

**Preservatives**

0.2 mg/ml in 1X PBS with 0.1 mg/ml rAlbumin (US sourced), 0.05% sodium azide

**Storage**

Store the recombinant Napsin A antibody at 2-8°C (with azide) or aliquot and store at -20°C or colder (without azide).



IHC staining of FFPE human lung adenocar...

**Note**

For research use only

**Application notes**

Optimal dilution of the recombinant Napsin A antibody should be determined by the researcher.

**Formula**

0.2 mg/ml in 1X PBS with 0.1 mg/ml BSA (US sourced), 0.05% sodium azide

**Isotype**

Rabbit IgG

**Clonality**

Recombinant

**Purity**

Protein A affinity chromatography

**Uniprot ID**

[O96009](#)

**Hazard Information**

This recombinant Napsin A antibody is available for research use only.

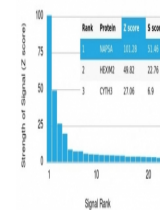
**Dilution Range**

Immunohistochemistry (FFPE): 1-2ug/ml for 30 minutes at RT

**Expiration Date**

12 months from date of receipt.

Human Protein Microarray Specificity Validation



Analysis of HuProt (TM) microarray conta...