
Product Datasheet

B7-H6 Antibody / NCR3LG1 (orb699800)

Description

B7-H6 (NCR3LG1) is a transmembrane endogenous



H6...

Species/Host

Mouse

Reactivity

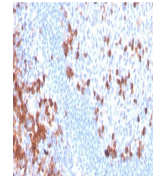
Human

Conjugation

Unconjugated

Tested Applications

IHC-P



IHC staining of FFPE human tonsil with B...

Immunogen

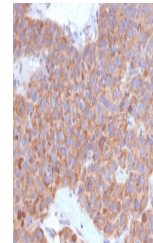
A portion of amino acids 38-169 from the human protein was used as the immunogen for the B7-H6 antibody.

Preservatives

0.2 mg/ml in 1X PBS with 0.1 mg/ml rAlbumin (US sourced), 0.05% sodium azide

Storage

Store the B7-H6 antibody at 2-8°C (with azide) or aliquot and store at -20°C or colder (without azide).



IHC staining of FFPE human liver carcino...

Note

For research use only

Application notes

Optimal dilution of the B7-H6 antibody should be determined by the researcher.

Formula

0.2 mg/ml in 1X PBS with 0.1 mg/ml BSA (US sourced), 0.05% sodium azide

Isotype

Mouse IgG1, kappa

Clonality

Monoclonal

Purity

Protein G affinity chromatography

Uniprot ID

Q68D85

Hazard Information

This B7-H6 antibody is available for research use only.

Dilution Range

Immunohistochemistry (FFPE): 1-2ug/ml for 30 minutes at RT

Expiration Date

12 months from date of receipt.