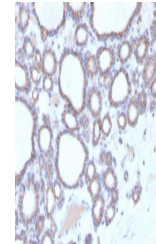


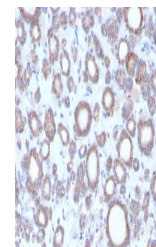
## Product Datasheet

### DBC2 Antibody / RHOBTB2 (orb699796)

<b>Description</b>	The Rho subfamily of Ras-related GTPases controls multiple aspects of cell function, including cytos...
<b>Species/Host</b>	Mouse
<b>Reactivity</b>	Human
<b>Conjugation</b>	Unconjugated
<b>Tested Applications</b>	IHC-P
<b>Immunogen</b>	A portion of amino acids 554-604 from the human protein was used as the immunogen for the DBC2 antibody.
<b>Preservatives</b>	0.2 mg/ml in 1X PBS with 0.1 mg/ml rAlbumin (US sourced), 0.05% sodium azide
<b>Storage</b>	Store the DBC2 antibody at 2-8°C (with azide) or aliquot and store at -20°C or colder (without azide).
<b>Note</b>	For research use only
<b>Application notes</b>	Optimal dilution of the DBC2 antibody should be determined by the researcher.
<b>Formula</b>	0.2 mg/ml in 1X PBS with 0.1 mg/ml BSA (US sourced), 0.05% sodium azide
<b>Isotype</b>	Mouse IgG2c, kappa
<b>Clonality</b>	Monoclonal
<b>Purity</b>	Protein G affinity chromatography
<b>Uniprot ID</b>	<a href="#">Q9BYZ6</a>
<b>Hazard Information</b>	This DBC2 antibody is available for research use only.
<b>Dilution Range</b>	Immunohistochemistry (FFPE): 1-2ug/ml for 30 minutes at RT
<b>Expiration Date</b>	12 months from date of receipt.

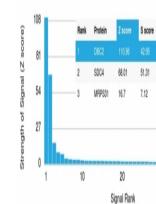


IHC staining of FFPE human thyroid with ...



IHC staining of FFPE human thyroid with ...

Human Protein Microarray Specificity Validation



Analysis of HuProt (TM) microarray conta...